

'Great Potential' Comments Moss

"Our team has great potential, if we can just get them to quit loafing." This was Coach Ray Moss' comment concerning the prospects for the remainder of the year's football schedule.

When asked which unit had greater power, Coach Moss replied that he felt that his defensive group is stronger than the offensive, even though the opposite has appeared to be true. He went on to explain that the defensive men have not played as well as had been expected. Some turned out to be much better than expected, but others fell short of the high hopes that the coaches held. Coach Moss appeared to be generally pleased over the team's first two showings, although understandably more optimistic about the Hillcrest game than the one with Belleville.

The coach aired a complaint as he said, "All summer people ask me about the Turkey Day game, as if it were the only one that counted. Webster's team is just as good as Kirkwood's but we have six more games before that one and it's not time to start worrying yet. One week is plenty of time."

Mr. Moss is in his twenty-third season of coaching the Webster varsity team.

Eye on Sports

by Bob Johnson

While the Belleville Maroons see red every time they play Webster, the Statesmen seem blinded by the lights. Belleville would probably like to play Webster every game, but the feeling isn't mutual. The Statesmen do have the distinction of being at the beginning and end of the Maroons' winning streak. Webster was the first of ten victims last season and a 33-6 scapegoat this year before Belleville broke into the loss column again.

Contrary to what some spectators may believe, Belleville did not have twice as many players on the field. They were just twice as big, enabling them to stand shoulder to shoulder on the goal line and keep Webster from getting closer than the 1 1/2-inch line at the close of the second period.

The Hillcrest encounter was a real toss-up. Hillcrest couldn't keep track of the ball, and Webster couldn't track the ball more than 139 yards down the field. In comparison to the Belleville game the Hillcrest encounter wasn't half as exciting because Webster wasn't trying to come from behind.

Although most St. Louis area fans have given up on baseball for this year, there is happy news for Webster sports enthusiasts. Bill Southworth, last year's three sport star, has signed a baseball contract with the Milwaukee Braves. Instead of going to Yale as originally planned, Bill is now taking a full year at Washington U. Next year he'll start on a semester basis with classes in the fall and baseball in the spring. Just so long as it isn't against the Cardinals, here's wishing Bill lots of success.



Photos by Paul

Upper left: Coach Ray Moss stands on the sidelines during a game; lower left: Coach Lenard Bryant of the B-team.

Bryant Predicts 'Tough Season'

Veteran Coach Lenard "Bear" Bryant expects a tough season for this year's B-team. According to the coach the team is small physically but has good spirit and a strong quarterback.

Clint Ives, the first string quarterback, agrees that the team is physically small but feels that when it wins it will be by a wide margin. Clint was quarterback on last year's Hixson C-team which had a 4-1 record.

Coach Bryant also has high hopes for center Ron Slaten. Ron was on the Steger ninth grade team which matched Hixson's 4-1 season. Plymouth, the third source of players, wound up with an 0-5 slate.

The squad has had a goal set for them by last year's B-team whose record was 6-1.

Hoping to beat that record the B-team defeated Ritenour last Saturday 13 to 7.

OCTOBER SPORTS CALENDAR

VARSITY FOOTBALL

Oct. 5—McCluer here
Oct. 12—U. City here
Oct. 26—Riverview there

B-TEAM FOOTBALL

Oct. 4—McCluer there
Oct. 11—U. City there
Oct. 19—Kirkwood here
Oct. 26—Riverview here

Tell your dad to trade

with

CARSON
PONTIAC

"A Good Place to Trade"
New Service Facilities
10230 Manchester Road

Statesmen Tie Ritenour In League Opener, 7-7

In a defensive battle, the Statesmen and the Ritenour Huskies fought to a 7-7 stalemate last Friday at Ritenour.

The Huskies jumped to a 7-0 lead in the first quarter on a pass. In the third period Webster's Walt Smallwood ran 57 yards to the Ritenour 14; a few plays later he went over from the five and Dunkman's kick made it 7-7.

Playing Hillcrest of Springfield for the first time, the Statesmen rolled to a 12-6 victory on September 21 here. The win evened Webster's record at 1-1.

Early in the first period Bob Droege recovered a Hillcrest fumble. Led by fullback Dave Cloud and halfbacks Walt Smallwood and Clarence Thornhill, the Statesmen marched to the two-yard line.

Webster fumbled and Hillcrest immediately punted. After Bob Droege recovered another Hillcrest fumble, Walt Smallwood broke away for a 15-yard touchdown romp.

A hard tackle caused a Hillcrest receiver to drop a pass and Webster grabbed it up. Later, when Tom Stuber saw his receivers covered, he ran 18 yards for a score.

Hillcrest scored early in the third quarter, but the attempt for

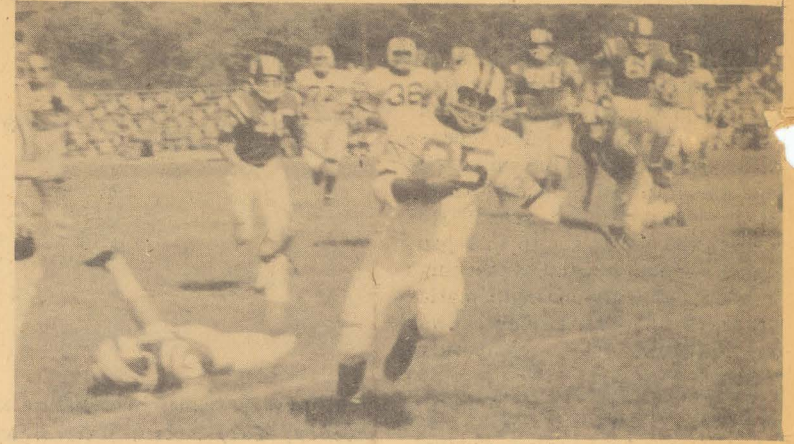


Photo by Hanchett

Junior Walt Smallwood sprints away from Hillcrest players to score a touchdown.

the extra point was blocked by Bob Dunstan. Hillcrest threatened to score again, but Guy Mellor intercepted a pass, and Tom Stuber ate up the clock with quarterback sneaks.

Under the lights at Belleville the Statesmen suffered a 33-6 defeat on September 13.

Even in the opening series of plays, Belleville's superior offense showed. The Maroons marched to a touchdown after the kickoff and then forced Webster

to punt. The Mike was over the kicker's head and Belleville took over on the 10. They then scored and led 13-0.

In the second quarter Webster marched 80 yards for a touchdown, but failed to get the extra point. Neal Losse, Dave Cloud, and Walt Smallwood led the way with fine running. Cloud plunged the last four yards for the score.

Late in the half the Statesmen had first and goal from inside the five, a chance to tie it up, but after four downs they were still inches short of the goal line.

Belleville dominated the second half with three touchdowns, and demoralized Webster was held scoreless.

GAA Begins Badminton, Field Hockey, Bowling

Junior and sophomore field hockey teams will begin their regular season October 17; seniors play their first game October 22. The teams were selected after tryouts held at Eden Seminary on Tuesday, September 24. From these three class squads players for the varsity team will be chosen.

Seniors will play three games: October 22 versus Ladue here, October 24 at Kirkwood, and November 5 at Ritenour. The juniors also have three matches: October 17 versus Ritenour here, October 22 versus Ladue here, and October 24 at Kirkwood. Sophomores will play four games: October 17 versus Ritenour here, October 24 at Kirkwood, October 28 at Ladue and November 5 versus U. City here.

In addition to field hockey, bowling and badminton have been offered this fall for girls. This year there are 25 GAA bowling teams under the supervision of Miss Canavan. The seniors will

SMITH SPORTING GOODS

GUNS-FISHING-CAMPING
Athletic Equipment
Eagle Stamps—Shoppers
Charge Service—Open Eves.
Lockwood & Gore WO 1-4742

MODERN BARBER SHOP

509 S. Elm
(across from Bettendorf's)

—Three Barbers—
DON, JIM & WALT

Lost

Class Ring—1963
Black Initials "J.D."
\$5 Reward
Turn in at office

Modern Banking Service For Modern People

- * Savings Account
- * Insurance Dept.
- * Installment Loans
- * Drive In Banking
- * Checking
- * Bank By Mail Services
- * Real Estate Dept.
- * Safe Deposit Dept.
- * 24 Hour Depository

4% on Savings Certificates

Your Friendly Bank Since 1900

with Complete Banking Services

LOBBY HOURS: Mon.-Thurs: 8:15 a.m. - 2:30 p.m.
Fridays: 8:15 a.m. - 2:30 p.m.

DRIVE-IN BANKING: Mon: 8:15 a.m. - 5:00 p.m.
Tues., Wed., Thur: 8:15 a.m. - 2:30 p.m.
Fri: 8:15 a.m. - 8:00 p.m.

INSTALLMENT LOAN: Mon.-Thurs: 8:15 - 5:00 p.m.
Fri: 8:15 a.m. - 8:00 p.m.

WEBSTER GROVES TRUST COMPANY

75 W. Lockwood • Webster Groves, Mo.
Woodland 1-2400

FOUNDED 1900 MEMBER F.D.I.C.

Lou's Shoes

Yorkshire Shopping Center
Highway 66
just west of Laclede Station Road

CHARLES A. GRAUBNER
FINE PRINTING — CHRISTMAS CARDS
No. 11 GRAY AVE. WO. 1-0628
WEBSTER GROVES 19, MO.